



Supplier Profile:

Rob & Caroline Gully

Nilma North, West Gippsland

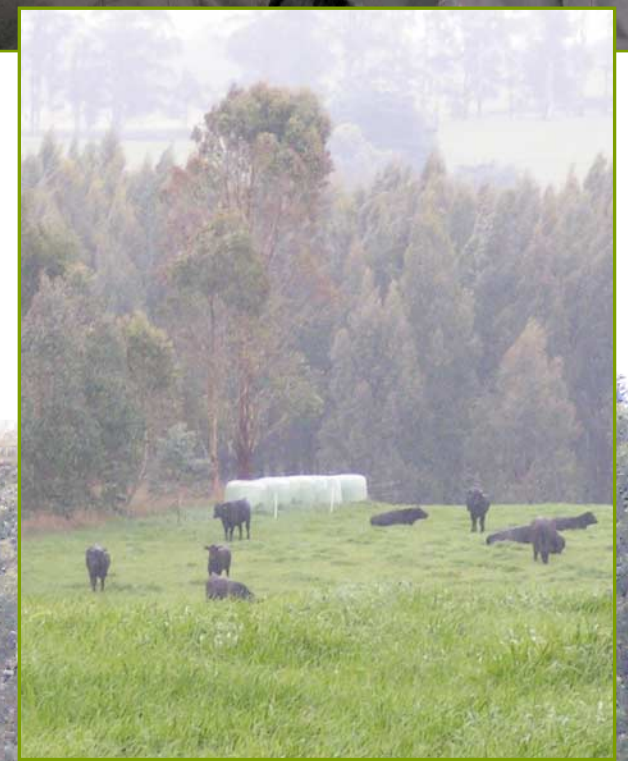
Dear Enviromeat consumer,

Our love of nature brought us to farming nearly 20 years ago, after other careers in the city. Our farm was almost totally cleared of native bush, and we have undertaken a program of extensive revegetation. We collect local seed and establish windbreaks in our paddocks and understorey in existing vegetation, creating corridors with habitat for local wildlife and improving biodiversity. These areas provide valuable shelter for the cattle and pastures, improving productivity. We are particularly interested in birds, and have seen the number of species of birds on the property increase dramatically over the years.

We believe farmers have an opportunity to actually improve the environment and we try to "think global, act local" in every aspect of our operation -we use strategies that have a positive impact on the soil, water and air and minimise chemical use.

We are sure you will enjoy the quality of the meat. The cattle are grown under optimum conditions, here on West Gippsland's beautiful green pastures, in a natural and stress-free environment. Thank you for supporting Enviromeat!

Rob and Caroline Gully



- ✓ Environmentally certified
- ✓ No artificial hormones
- ✓ Free range
- ✓ Guaranteed tender



We are farming for the long term to guarantee you have the best quality meat both now and into the future.